



SERIE AM

Accessori per manometri

AM 401

Serpentina per basse pressioni

- tubo di acciaio inox AISI 316;
- attacchi di acciaio inox AISI 316 con filettatura G 1/2 B (1/2 Gas o BSP) maschio fisso e femmina girevole, o 1/2-14 NPT (1/2 NPT) maschio e femmina fissi;
- saldatura ad arco elettrico in atmosfera controllata;
- pressione di esercizio max 60 bar;
- temperatura di utilizzo max 300 °C.



AM 403

Serpentina per alte pressioni

- tubo di acciaio inox AISI 316L;
- attacchi di acciaio inox AISI 316L con filettatura G 1/2 B (1/2 Gas o BSP) maschio fisso e femmina girevole, o 1/2-14 NPT (1/2 NPT) maschio e femmina fissi saldati a TIG o ricavati direttamente sul tubo per 1/2 NPT;
- pressione di esercizio max 180 bar;
- temperatura di utilizzo max 400 °C.



AM SERIES

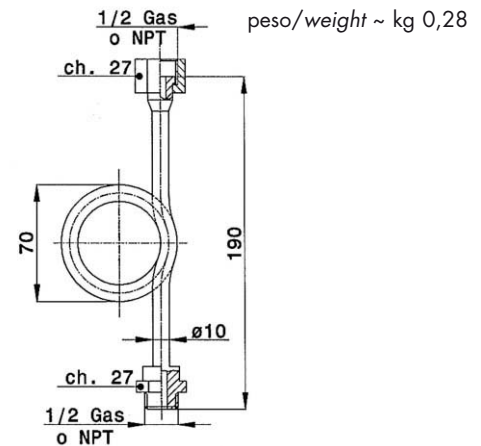
Accessories for pressure gauges

AM 401

Siphon for low pressures

- AISI 316 stainless steel pipe;
- AISI 316 stainless steel threaded connections, fixed male and revolving female G 1/2 B (1/2 Gas or BSP) or fixed male and female 1/2-14 NPT (1/2 NPT);
- TIG welding;
- working pressure max 60 bar;
- operating temperature max 300 °C.

AM 401

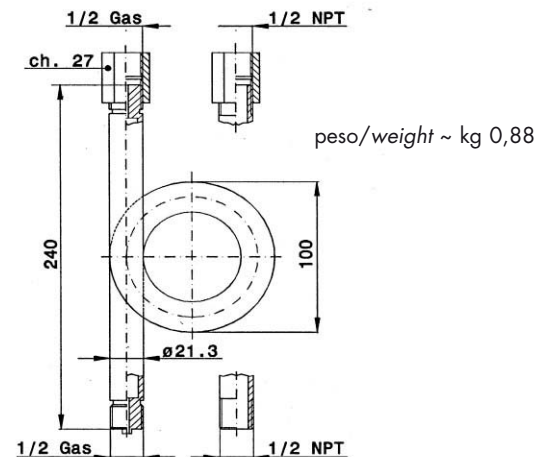


AM 403

Siphon for high pressures

- AISI 316L stainless steel pipe;
- AISI 316L stainless steel threaded connections, fixed male and revolving female G 1/2 B (1/2 Gas or BSP) or fixed male and female 1/2-14 NPT (1/2 NPT), TIG welded or made on pipe for 1/2 NPT;
- working pressure max 180 bar;
- operating temperature max 400 °C.

AM 403

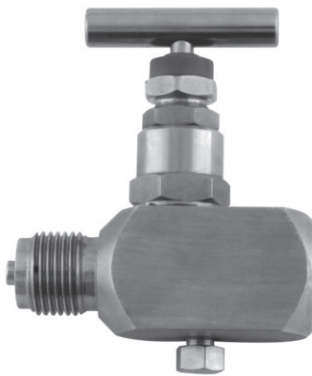




AM 409/410

AM 409 - Valvola portamanometro a due vie AM 410 - Valvola portamanometro a tre vie

- corpo di acciaio inox AISI 316L;
- otturatore a spillo di acciaio inox AISI 316L;
- attacchi con filettatura G 1/2 B (1/2 Gas o BSP) o 1/2-14 NPT (1/2 NPT) maschio/femmina o femmina/femmina (solo AM 409) fissi;
- flangetta Ø 40 per il manometro di controllo (**AM 410**);
- maniglie di acciaio inox AISI 304;
- tappo di spurgo;
- pressione di esercizio max 400 bar;
- temperatura di utilizzo max 210 °C (500 °C su richiesta).



AM 409

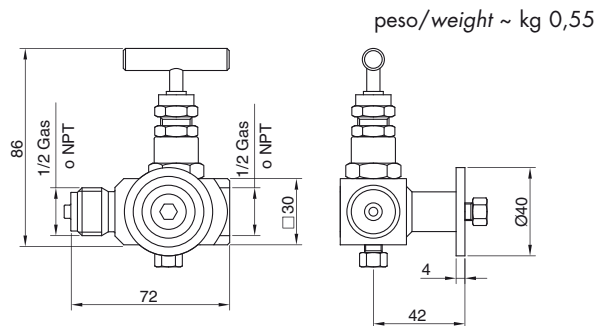
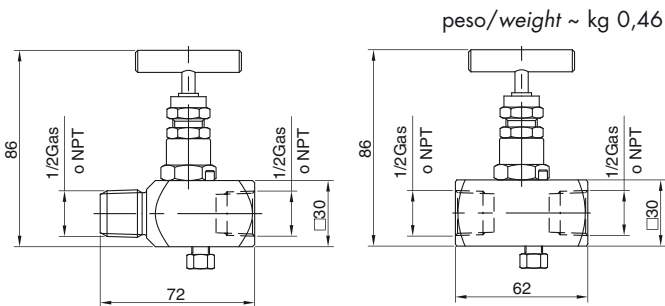
AM 409/410

AM 409 - Pressure gauge two-way valve AM 410 - Pressure gauge three-way valve

- AISI 316L stainless steel body;
- AISI 316L stainless steel needle plug;
- fixed male/female or female/female (only AM 409) G 1/2 B (1/2 Gas or BSP) or 1/2-14 NPT (1/2 NPT) threaded connections;
- little flange Ø 40 for test gauge (**AM 410**);
- AISI 304 stainless steel handles;
- drain plug;
- working pressure max 400 bar;
- operating temperature max 210 °C (500 °C on request).



AM 410



AM 411

Ammortizzatore a vite di regolazione

- corpo di acciaio inox AISI 316;
- attacchi con filettatura G 1/2 B (1/2 Gas o BSP) o 1/2-14 NPT (1/2 NPT) maschio e femmina fissi;
- vite di regolazione di acciaio inox AISI 316;
- pressione di esercizio max 400 bar;
- temperatura di utilizzo max 150 °C.

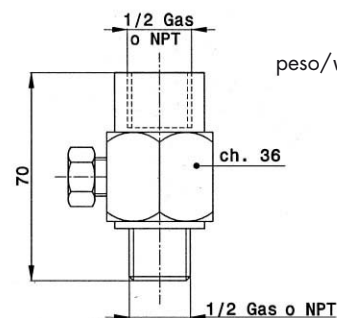


AM 411

Adjustable screw damper

- AISI 316 stainless steel body;
- fixed male and female G 1/2 B (1/2 Gas or BSP) or 1/2-14 NPT (1/2 NPT) threaded connections;
- AISI 316 stainless steel adjusting screw;
- working pressure max 400 bar;
- operating temperature max 150 °C.

AM 411





AM 413/415/417

Manifold

- corpo di acciaio inox AISI 316L;
- otturatori a spillo di acciaio inox AISI 316L;
- maniglie di acciaio inox AISI 304;
- pressione di esercizio max 400 bar;
- temperatura di utilizzo max 210°C (500 °C su richiesta).

AM 413 - Tre valvole

- attacchi in entrata:
 - o G 1/2 B (1/2 Gas o BSP) o 1/2-14 NPT EXT (1/2 NPT) maschio;
 - o 1/4-18 NPT (1/4 NPT) femmina;
 - o altre filettature su richiesta;
- attacchi in uscita G 1/2 B (1/2 Gas o BSP) femmina girevoli.

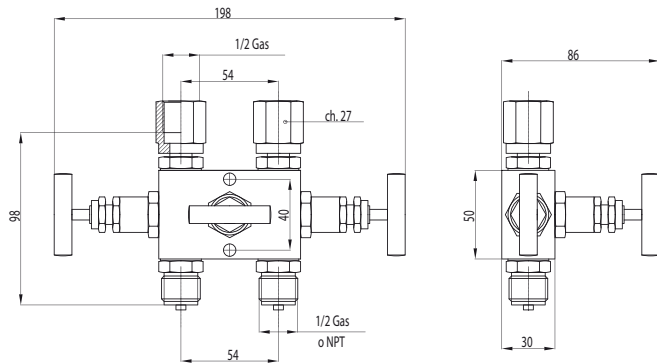
AM 415 - Cinque valvole

- attacchi in entrata e uscita 1/2-14 NPT (1/2 NPT) femmina;
- tappi di spurgo da 1/4-18 NPT.

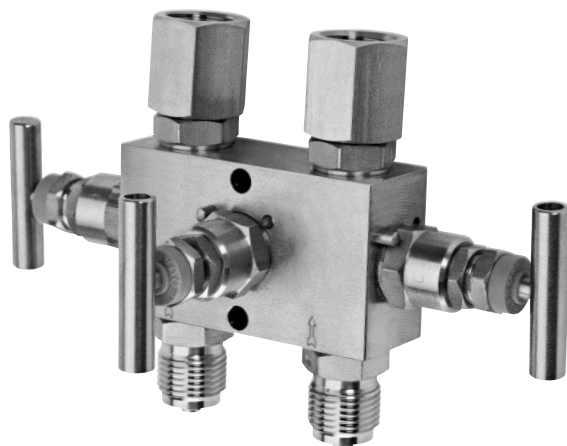
AM 417 - Cinque valvole

- attacchi in entrata:
 - o G 1/2 B (1/2 Gas o BSP) o 1/2-14 NPT EXT (1/2 NPT) maschio;
 - o altre filettature su richiesta;
- attacchi in uscita G 1/2 B (1/2 Gas o BSP) femmina girevoli;
- tappi di spurgo da 1/4-18 NPT.

AM 413



peso/weight ~ kg 1,70



AM 413/415/417

Manifold

- AISI 316L stainless steel body;
- AISI 316L stainless steel needle plugs;
- AISI 304 stainless steel handles;
- working pressure max 400 bar;
- operating temperature max 210 °C (500 °C on request).

AM 413 - Three valve

- input connections:
 - o male G 1/2 B (1/2 Gas or BSP) or 1/2-14 NPT EXT (1/2 NPT);
 - o 1/4-18 NPT (1/4 NPT) female;
 - o others threaded on request;
- output connections revolving female G 1/2 B (1/2 Gas or BSP).

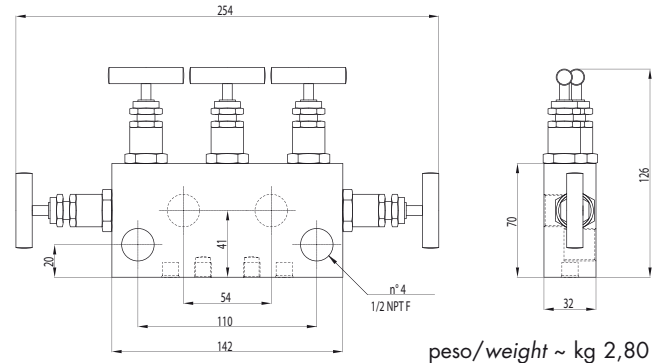
AM 415 - Five valve

- 1/2-14 NPT (1/2 NPT) female input and output connections;
- 1/4-18 NPT (1/4 NPT) drain plugs.

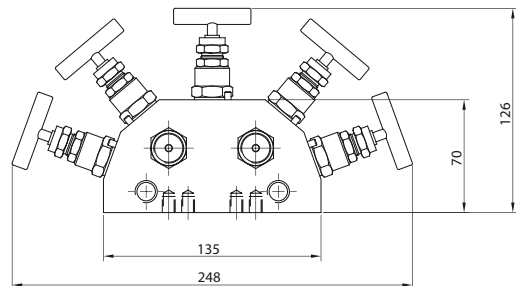
AM 417 - Five valve

- input connections:
 - o male G 1/2 B (1/2 Gas or BSP) or 1/2-14 NPT EXT (1/2 NPT);
 - o others threaded on request;
- output connections revolving female G 1/2 B (1/2 Gas or BSP);
- 1/4-18 NPT (1/4 NPT) drain plugs.

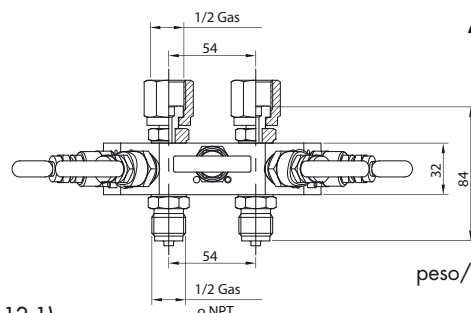
AM 415



peso/weight ~ kg 2,80



AM 417



peso/weight ~ kg 3,20



AM 416

Limitatore di pressione tarabile

- corpo di acciaio inox AISI 316L;
- elemento otturatore di acciaio inox AISI 316L;
- attacchi con filettatura G 1/2 B (1/2 Gas o BSP) o 1/2-14 NPT (1/2 NPT) maschio e femmina fissi;
- guarnizioni di tenuta di FPM (Viton);
- valore di reinserimento -30% del valore di intervento;
- pressione di esercizio max 500 bar;
- temperatura di utilizzo max 100 °C.

- **Esecuzione 1:**
- campo tarabile 200 mbar ÷ 1 bar;
- **Esecuzione 2:**
- campo tarabile 1 bar ÷ 3 bar;
- **Esecuzione 3:**
- campo tarabile 3 bar ÷ 16 bar;
- **Esecuzione 4:**
- campo tarabile 16 bar ÷ 35 bar;
- **Esecuzione 5:**
- campo tarabile 35 bar ÷ 160 bar;
- **Esecuzione 6:**
- campo tarabile 160 bar ÷ 350 bar.

AM 416

Adjusting over-pressure protector

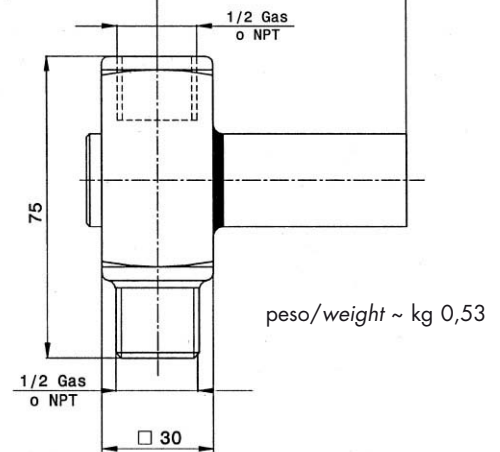
- AISI 316L stainless steel body;
- AISI 316L stainless steel stopper;
- fixed male and female G 1/2 B (1/2 Gas or BSP) or 1/2-14 NPT (1/2 NPT) threaded connections;
- FPM (Viton) seals;
- resetting value -30% of setting value;
- working pressure max 500 bar;
- operating temperature max 100 °C.

- **Execution 1:**
- setting range 200 mbar ÷ 1 bar;
- **Execution 2:**
- setting range 1 bar ÷ 3 bar;
- **Execution 3:**
- setting range 3 bar ÷ 16 bar;
- **Execution 4:**
- setting range 16 bar ÷ 35 bar;
- **Execution 5:**
- setting range 35 bar ÷ 160 bar;
- **Execution 6:**
- setting range 160 bar ÷ 350 bar.

AM 416



76 per esec. 1/2
66 per esec. 3/4/5/6



COME ORDINARE

Model				
AM 401	AM 409	AM 411	AM 415	AM 417
AM 403	AM 410	AM 413	AM 416	

HOW TO ORDER

Execution		
1	3	5
2	4	6

Connections
1/2 Gas
1/2 NPT

EXAMPLE = AM 416-2 X 1/2 Gas